

License Installation Guide

Two different licensing schemes are available for the software, **node-locked** and **floating**. Node-locked licenses grant permission to run the licensed software on one computer (node) only. Floating licenses grant permission to run the licensed software on several computers. One floating license can activate only one instance of the program at any given time.

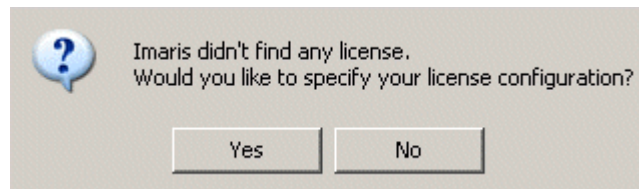
Node-locked licenses are the easiest way to license the software. The installation of node-locked licenses is guided by the Imaris software itself.

Floating licenses require the installation of a separate license server that can run either on a Windows or on an Irix computer. The server installation requires more technical knowhow.

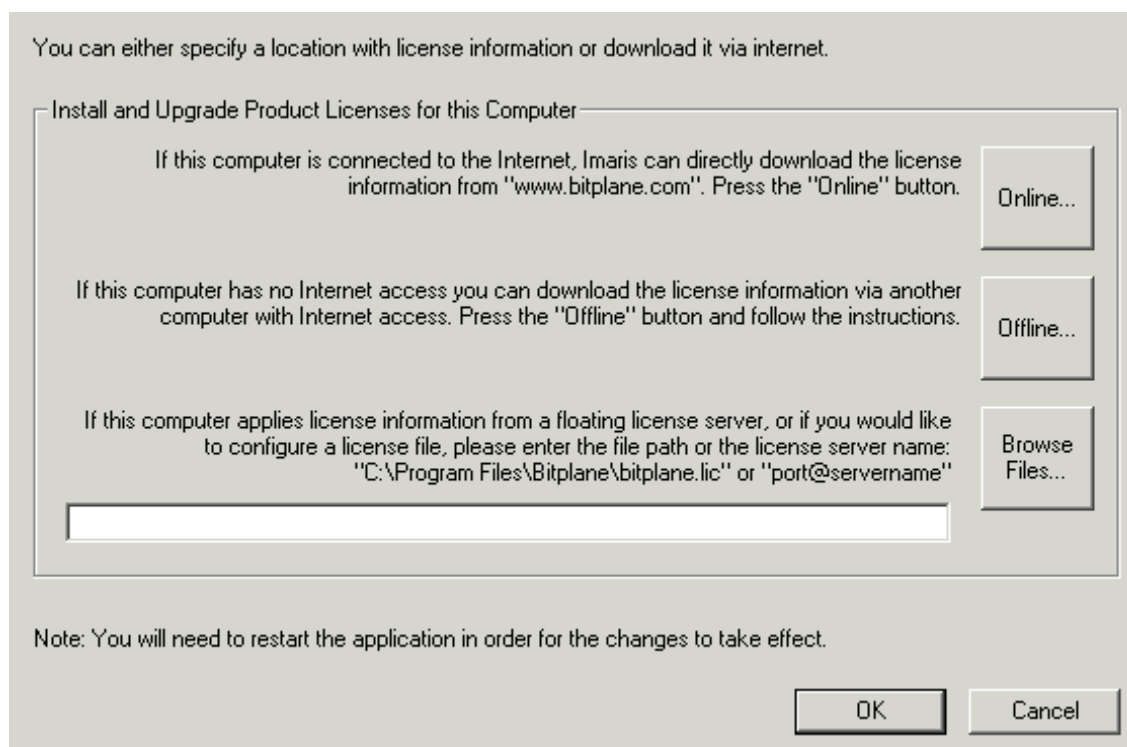
Imaris Online

The following procedure describes how to install node-locked licenses for Imaris, if the computer on which you want Imaris to run is connected to the internet. If your computer is not connected to the internet, follow the instructions in the section "Imaris Offline".

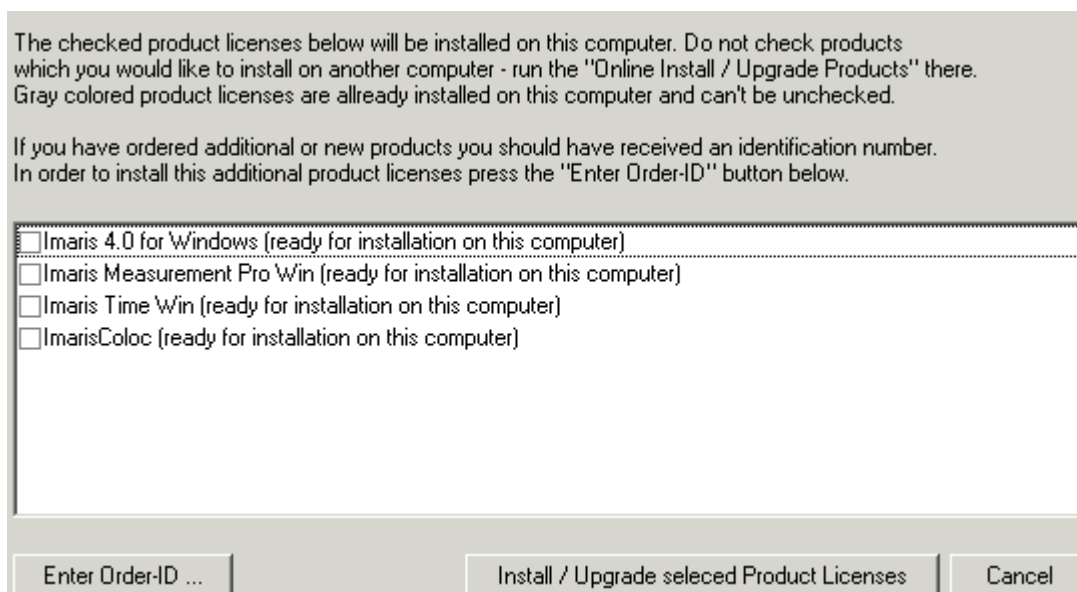
1. Start the Imaris software on the computer on which you want to install licenses. You will see the following dialog:



Click "Yes" to get to the license installation dialog.



2. If your computer is connected to the internet, click the "Online..." button on the license installation dialog. You will then be asked to enter the **Order-ID** from your purchase order. Given the Order-ID the software will try to fetch the corresponding list of purchased products. The following figure shows a list with four products.

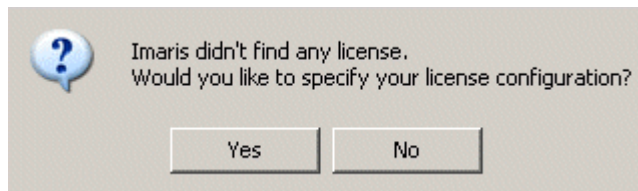


3. From the list of products carefully select those that you want to install on the computer you are currently using. Note that it is not possible to repeat the license installation on another computer unless you have purchased several licenses.
4. Press "Install/Upgrade selected Product Licenses" to install licenses for the selected products.
5. Restart Imaris for the new licenses to take effect.

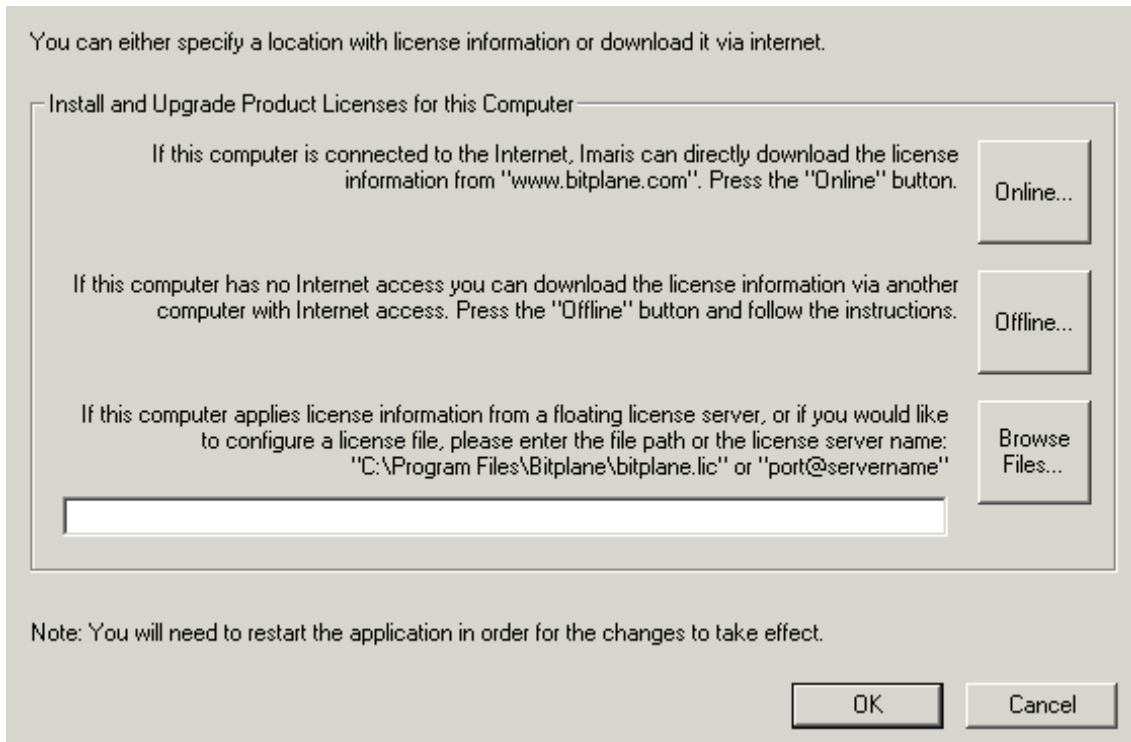
Imaris Offline

The following procedure describes how to install node-locked licenses for Imaris, if the computer on which you want Imaris to run is not connected to the internet. If your computer is connected to the internet, follow the instructions in the section "Imaris Online".

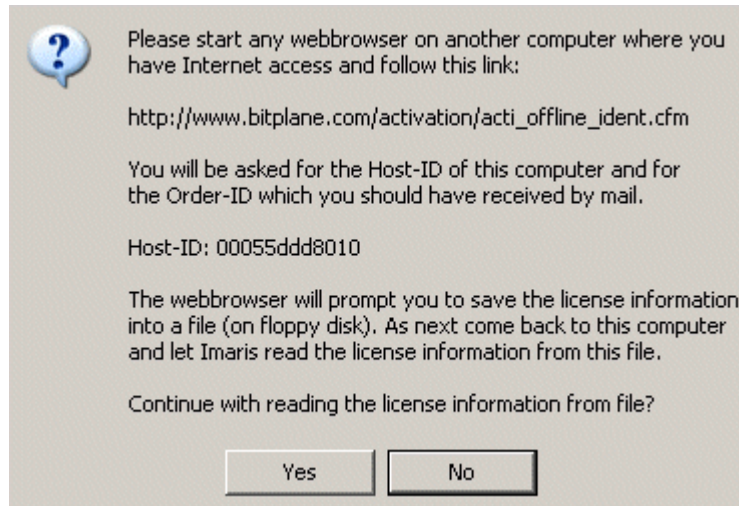
1. Start the Imaris software on the computer on which you want to install licenses. You will see the following dialog:



Click "Yes" to get to the license installation dialog.



2. If your computer is not connected to the internet, click the "Offline..." button on the license installation dialog. You will then be asked to go to another computer that is connected to the internet and to open a specified web-page. You need to take with you the **Host-ID** of the computer on which you want to install licenses. You find the Host-ID in the dialog.



3. Enter the Host-ID of the computer on which you want to install licenses and the Order-ID into the specified fields on the web-page and click "Submit Identification". The web-page will then be updated to display the list of products corresponding to your Order-ID.

Your identification

Your computer's Host-ID:

Your OrderID:

Done. This new order item has been registered to the Host ID you specified.

Products installed on computer '00055ddd8010':

Imaris 4.0 for Windows (upgradeable until 2004-04-21)

Imaris Measurement Pro Win (ready for installation on this computer)

Imaris Time Win (ready for installation on this computer)

ImarisColoc (ready for installation on this computer)

4. From the list of products carefully select those that you want to install on the computer you are currently using. Note that it is not possible to repeat the license installation on another computer unless you have purchased several licenses.
5. Press "Install/Upgrade selected Product Licenses". The web-page will be updated to tell you that a license file has been generated. Follow the instructions to save the license file and then copy the file to the computer for which you generated licenses. It is suggested that you copy the file to the directory where the Bitplane software is installed, typically "C:\Program Files\Bitplane", and that you name the file "bitplaneW.lic".
6. Restart Imaris for the new licenses to take effect.

